

Reinhold Environmental Ltd.



2008 NO_x-Combustion Round
Table & Expo Presentation

February 4-5, 2008 in Richmond, VA

SCR Application Projects

NIPSCO - Bailly Station

(1) 11'0" x 44'0" x 3'0"

(1) 12'0" x 47'0" x 3'0"

NIPSCO – Michigan City Station

(4) 13'6" x 25'0" x 3'0"

NIPSCO – RM Schahfer Station

(4) 13'6" x 25'0" x 3'0"

Dayton Power & Light – Killen Station

(1) 11'0" x 30'0" x 3'0"

(1) 21'0" x 24'0" x 3'0"

Dayton Power & Light – J.M. Stuart Station

(1) 11'6" x 27'0" x 3'0"

(1) 9'5" x 91'0" x 3'0" (Multi-Size)

Tampa Electric – Big Bend Station (no dampers)

(4) 60'2" x 12'0" x 3'0 (Multi-Size)

PPL , LLC - Montour Plant

(2) 72'6" x 9'9" x 3'0" (Multi-Size)

(2) 34'0" x 12'0" x 3'0" (Multi-Size)

(2) 20'0" x 12'0" x 3'0" (Multi-Size)

Dayton Power & Light – JM Stuart Station



SCR Inlet Duct Balloon – 9'6" high x 91'0" Wide

Dayton Power & Light – J.M Stuart Station



Close up of mating sections between sections

Dayton Power & Light - JM Stuart Station



Air Chamber Supply Details

Dayton Power & Light- JM Stuart Station



Each section weighs about 45 lbs

PPL MONTOUR, LLC



3 Section measuring 75'0" long x 9'9" wide

PPL MONTOUR, LLC



Any section can be replaced if necessary

PPL MONTOUR, LLC

Each section measures
25'0" x 9'9" wide x 3'0"
thick



PPL MONTOUR, LLC



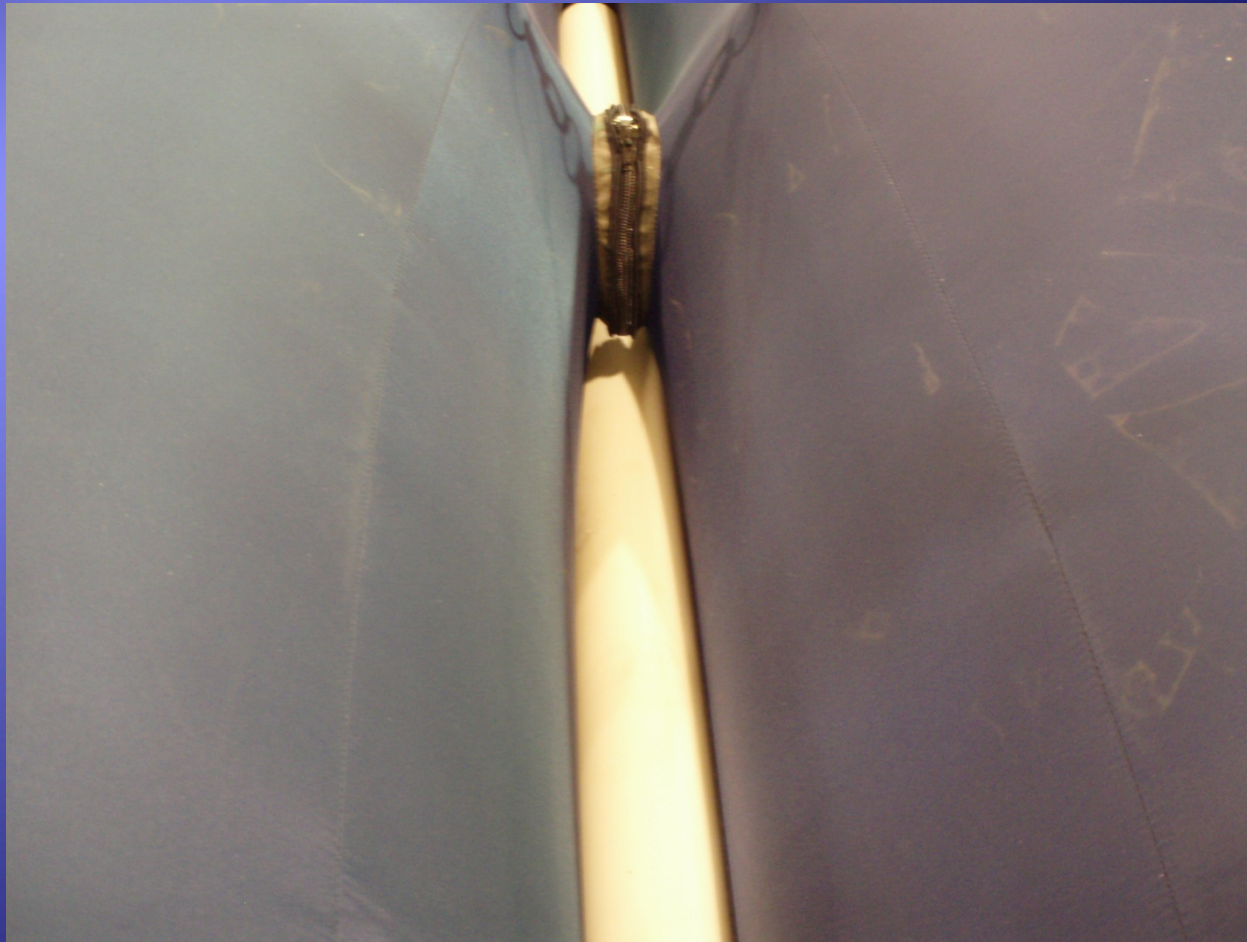
3 section measuring 34' wide x 12'0" high x 3'0"

PPL MONTOUR, LLC



2 section measuring 20' wide x 12' high x 3' deep

PPL MONTOUR, LLC



Section design to envelope existing support steel

PPL MONTOUR, LLC

Side view of 20" x 12' x 3' showing air supply connections



PPL MONTOUR, LLC

All inflation tube connections are 8" diameter



Zip off caps allow movement of inflation tube on balloon



PPL MONTOUR, LLC

Connection to balloon
can be zippered or
sewn



Use Flex-Duct from
blower to balloon or
between sections



FGD Duct Work – Epoxy Coating



Cleco Power, LLC
Dolet Hills Station – Mansfield, LA
27' x 26' x 3' with one HP Blower

Pure Air at NIPSCO Bailly Station Chesterton, IN



Various locations considered for installation